

## What You Will Learn in Class

This wall-hanging is basically a 1-block quilt. All the blocks are made with some combination of the same 4 pattern pieces. There is no appliqué used in construction; it is all pieced. You will learn a method of curved piecing that is very forgiving: NO pins and NO fussy matching is required. It is really quite simple, once you see how it is done.

When you sew the blocks to each other, none of the seams need to match, so quilt construction is also easy. Plus, the blocks can be turned and arranged in many different ways, so you can have fun putting them together to make your own unique design. I'll show you how to select fabric to make a variety of blocks, so there is no tedious pre-planning.

## Fabric Requirements

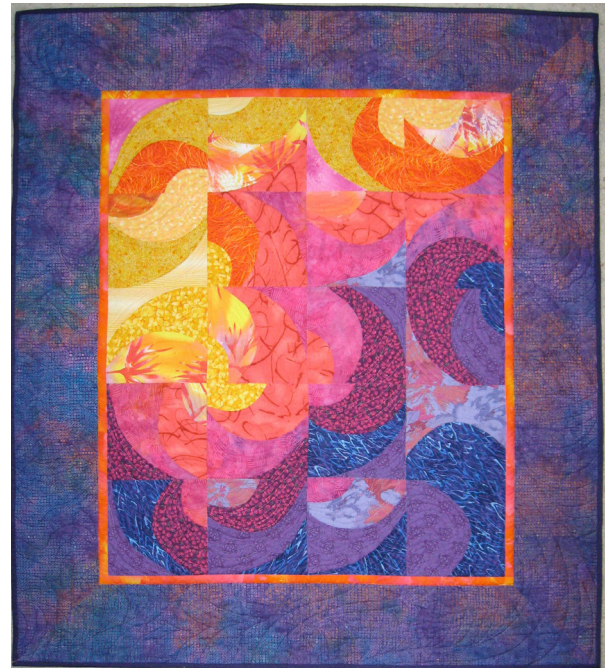
Bring a good variety of fabrics to work with, in values ranging from LIGHT to DARK. Try to get 4 lights, 4 mediums and 4 darks. I think one reason my sample quilt has such a feeling of energy and motion is because I used 12 different fabrics to make the blocks, with colors ranging from pale yellow to dark cobalt blue.

The total yardage needed to make twenty 6" blocks (as in the sample quilt) is about 3 to 3½ yards. Fat quarters or long quarters are fine, as well as large scraps. If using fat quarters, that would be 12 to 14 fat quarters. If you have one fabric that you especially like, particularly if it is a medium multicolor print, you might want to bring a half yard of that.

For the outer border, I used 4 strips, 6½" wide, which is about ¾ yard.

## What to Bring to Class

- Bring ALL of your fabrics for the project - even those you are thinking of using and are not sure about.
- This is important! You need an open-toe embroidery foot for your machine. In a pinch a zipper foot may work. This is what an open-toe foot looks like:



- Sewing machine in good running condition, with a NEW 80/12 needle, TopStitch or Microtex/Sharp. Zig-zag not required. We will be doing straight stitch only, but it helps if you can move the needle position to sew just next to the open-toe foot.
- Machine cords, foot pedal and instruction book. If your machine comes with an extended bed, or you have a Sew Steady table for it, please bring it.
- 1 sheet, 8½" x 11" heat-resistant template plastic (usually made out of mylar; one brand name is Templar)
- Small mat and standard rotary cutter
- Square acrylic ruler, at least 6½"
- Good quality sewing thread in a neutral color. I prefer MasterPiece by Superior Threads.
- At least 2 filled bobbins
- black fine-line permanent marker
- spray sizing or starch
- small paintbrush or stencil brush
- permanent glue stick: This can be the SewLine glue pen (which is made for fabric) or a glue stick from the office supply store.
- terry-cloth washcloth
- Basic sewing supplies such as pins, scissors, seam ripper, chocolate candy.
- Your lunch if you do not want to take time out from class to buy lunch.