

CutRite™ Double Wedding Ring Plus Template Set

Using the *Slit 'N Sew™* Method

*The Fastest, Easiest Way to Piece
for Quilters of all Skill Levels*

What is the Slit 'N Sew™ Method by Quilter's Paradise?

Slits cut into pieces for easy and perfect alignment during piecing - each and every time.

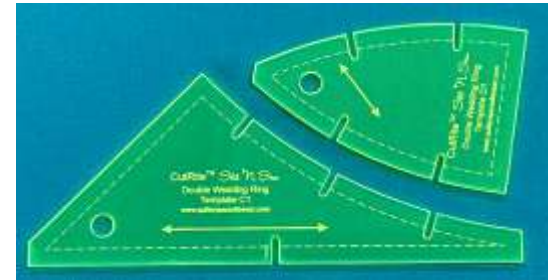
No tedious pinning or paper piecing saving lots of time and effort!

Can be performed by all quilters, from beginner to expert!

Please visit our web site for more information, videos and other Slit 'N Sew products.

Making Quilting Simpler

www.quiltersparadiseesc.com



Finished Double Wedding Ring Plus Table Runner



Quilter's Paradise

Making Quilting Simpler

www.quiltersparadiseesc.com

Designed and Written by Quilter's Paradise
© Quilter's Paradise All rights reserved.
Made in USA

Please Note

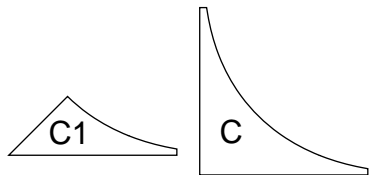
The CutRite™ Slit 'N Sew™ Double Wedding Ring (DWR) Plus template set introduces 2 new templates that are in addition to the 5 templates in the original Slit 'N Sew Double Wedding Ring template set.

You will need the original DWR templates to make a DWR quilt using the DWR Plus templates.

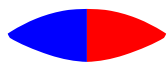
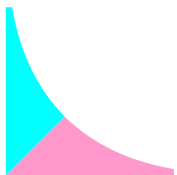
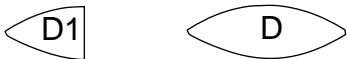
These instructions cover the use of the DWR Plus templates. Please consult the instructions for the original DWR templates for using them. If you cannot locate your copy, you may find all Slit 'N Sew template instructions online on our web site. First, go to the [Slit 'N Sew main page](#) of our web site. Once on that page, click on the template you want the instructions for and you will find a link to the instructions on the page that comes up.

This page is intentionally blank.

The Double Wedding Ring Plus template set consists of 2 templates, C1 and D1, as shown below.

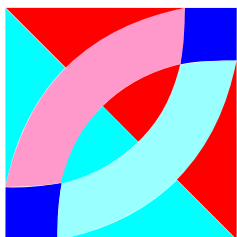


Putting 2 C1 pieces together creates a C piece and putting 2 D1 pieces together creates a D piece.



What's fun and creates new design possibilities is that the 2 C1 (or 2 D1) pieces can be different fabrics!

Yardage Requirements



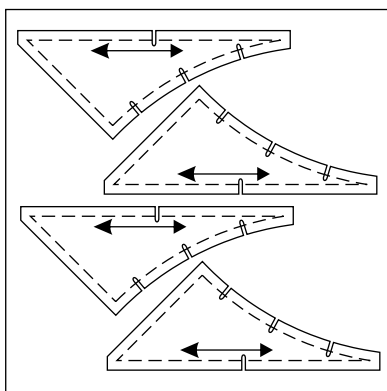
Shown is one DWR block.

There are 4 Piece C1's per block and 2 Piece D1's per block.

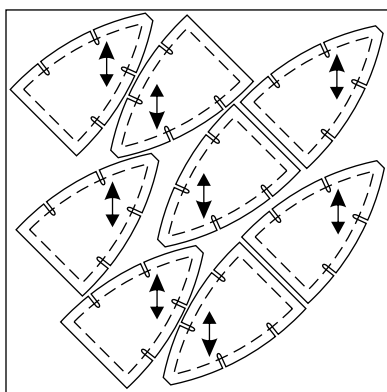
Each ring needs 4 blocks.

Shown below are how many Piece C1s and D1s can be cut from a single 10" square.

2 Piece C1s and 2 Piece C1R*s per 10" square.



8 Piece D1s per 10" square.



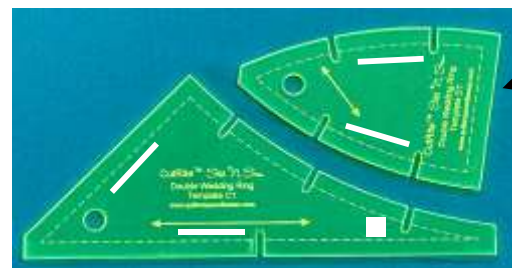
To calculate the yardage needed for the pieces for your project, you may use our free Slit 'N Sew Fabric Calculator at <https://www.quiltersparadiseesc.com/Calculators/SnS Fabric Calculator/Slit N Sew Fabric Calculator.php>.

Cutting Directions

Remove templates from package. Affix the CutRite™ HandiGrabber material to the back of the templates so they will not slide when cutting.

In summary, you will cut two Piece C1s and sew them together to create a Piece C and likewise cut two Piece D1s and sew them together to create a Piece D.

All other cutting directions to create your Double Wedding Ring quilt can be found in the instructions for the original DWR template set.

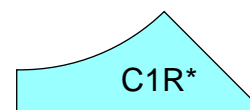
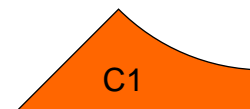


Fully cut out Piece D1 and cut each slit.

Always cut from the inside to the outside!

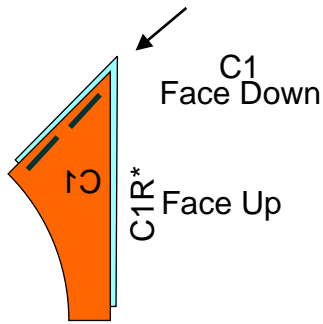
Fully cut out Piece C1 and cut each slit.

You will also need to cut a Piece C1 in reverse (see below).



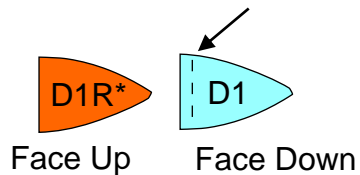
Sewing Directions

Set stitch length to 1.8.



Place Piece C1R* face up.
Place Piece C1 face down matching the edges.
Stitch an accurate 1/4" seam along the edge.

Press this seam open.



Piece D1R* goes directly underneath Piece D1

Place Piece D1R* face up.

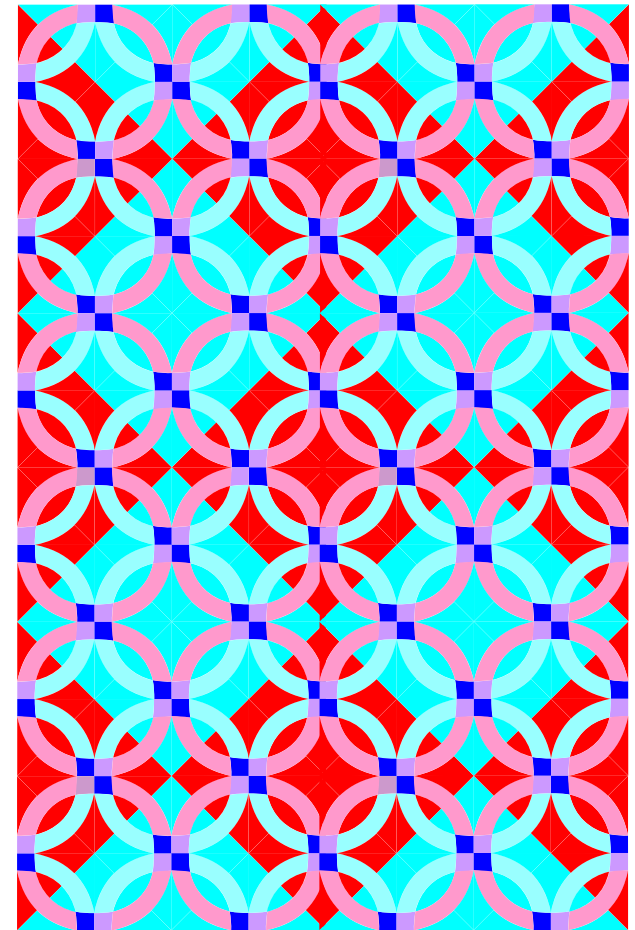
Place Piece D1 face down on top of Piece D1R* matching the edges.

Stitch an accurate 1/4" seam along the edge.

Press this seam open.

Now follow the directions in the original Double Wedding Ring instructions.

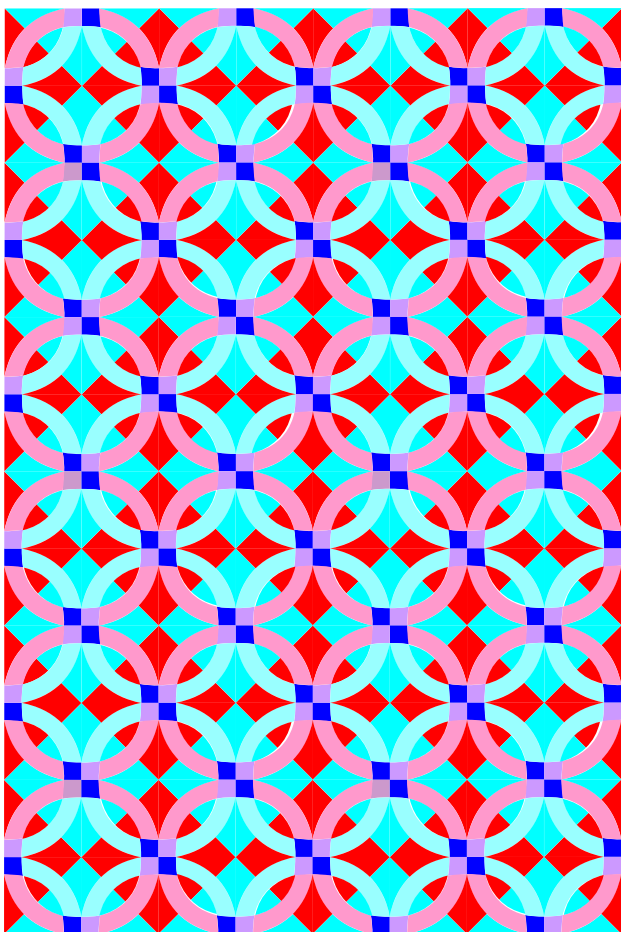
Layout 4: Large Diamonds



64" x 96"

Pieces Needed for Quilt						
Piece	Blue	Red	Light Blue	Pink	Dark Blue	Lavender
A	0	0	0	0	0	0
B	0	0	96	96	0	0
C	48	48	0	0	0	0
D	24	24	0	0	0	0
E	0	0	0	0	96	96
C1	48	48	0	0	0	0
C1R	48	48	0	0	0	0
D1	48	48	0	0	0	0

Layout 3: Small Diamonds



64" x 96"

Pieces Needed for Quilt						
Piece	Blue	Red	Light Blue	Pink	Dark Blue	Lavender
A	0	0	0	0	0	0
B	0	0	96	96	0	0
C	0	0	0	0	0	0
D	0	0	0	0	0	0
E	0	0	0	0	96	96
C1	96	96	0	0	0	0
C1R	96	96	0	0	0	0
D1	96	96	0	0	0	0

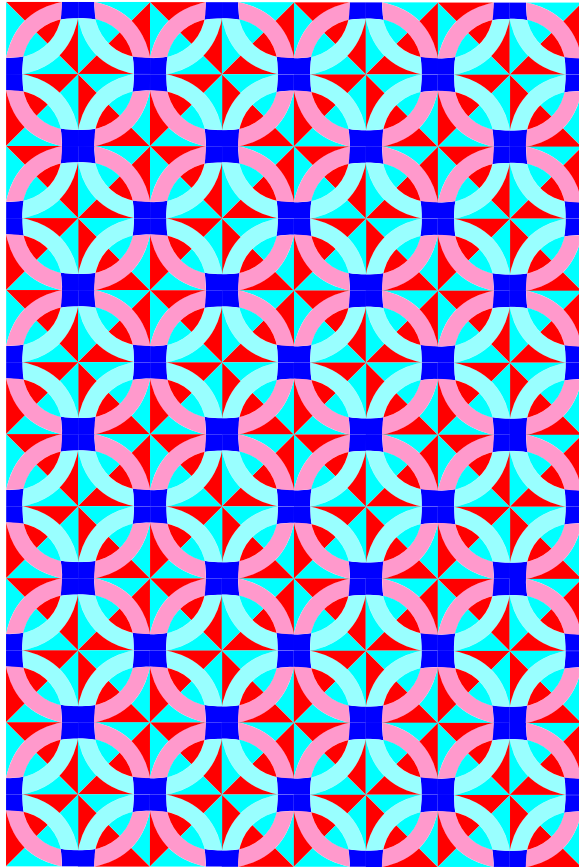
Example Layouts

The following pages contain some example layouts using the DWR Plus templates.

Please note that in some of the layouts, some blocks use Piece C and some use Piece C1. Likewise, some blocks use Piece D and some use Piece D1.

Each layout showcases a different "background effect" that nicely complements the DWR rings.

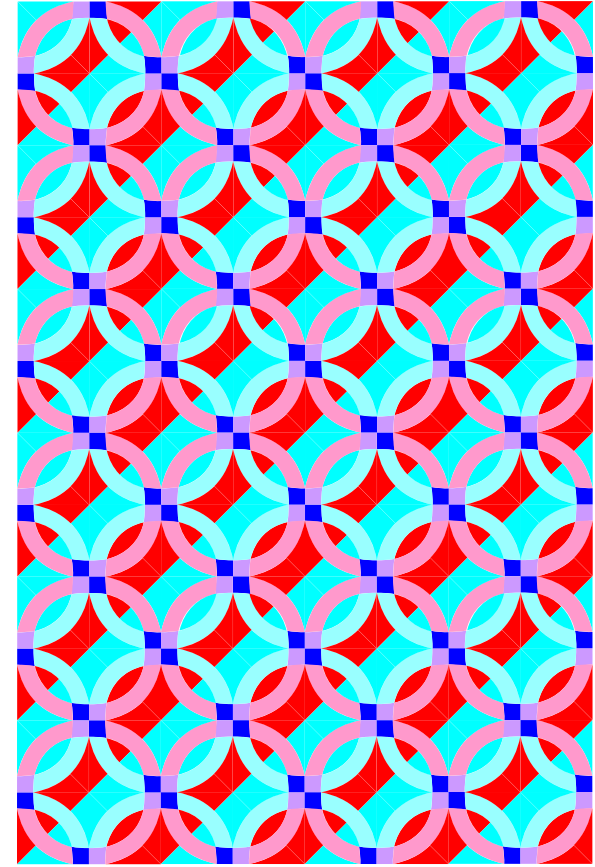
Layout 1: Pinwheel



64" x 96"

Pieces Needed for Quilt					
Piece	Blue	Red	Light Blue	Pink	Dark Blue
A	0	0	0	0	0
B	0	0	96	96	0
C	0	0	0	0	0
D	0	0	0	0	0
E	0	0	0	0	192
C1	96	96	0	0	0
C1R	96	96	0	0	0
D1	96	96	0	0	0

Layout 2: Diagonal Stripes



64" x 96"

Pieces Needed for Quilt						
Piece	Blue	Red	Light Blue	Pink	Dark Blue	Lavender
A	0	0	0	0	0	0
B	0	0	96	96	0	0
C	48	48	0	0	0	0
D	24	24	0	0	0	0
E	0	0	0	0	96	96
C1	48	48	0	0	0	0
C1R	48	48	0	0	0	0
D1	0	0	48	48	0	0