

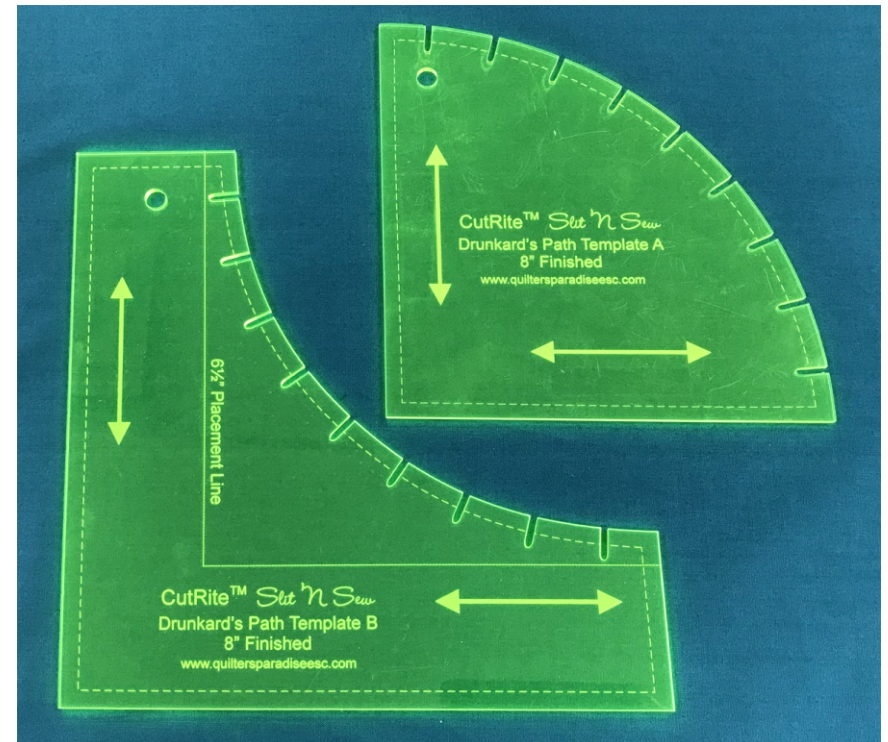


Finished Block

CutRite™ Drunkard's Path 8" Finished Template

Using the *Slit 'N Sew™* Method

*The Fastest, Easiest Way to Piece
for Quilters of all Skill Levels*



What is the Slit 'N Sew™ Method by Quilter's Paradise?

Slits cut into pieces for easy and perfect alignment during piecing - each and every time.

No tedious pinning or paper piecing saving lots of time and effort!

Can be performed by all quilters, from novice to expert!

Please visit our web site for more information, videos and other Slit 'N Sew products.

Making Quilting Simpler

www.quiltersparadiseesc.com



Quilter's Paradise

Making Quilting Simpler

www.quiltersparadiseesc.com

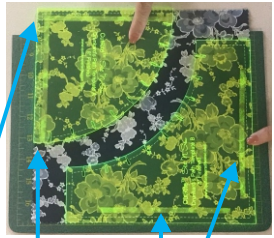
Designed and Written by Quilter's Paradise

© Quilter's Paradise All rights reserved.

Made in USA

Cutting Directions

Remove templates from package. Affix the CutRite™ HandiGrabber material to the back of the templates so they will not slide when cutting. We suggest adding 1/4" wide strips along each straight edge of each template on the inside of the engraved 1/4" seam allowance line. See picture below.

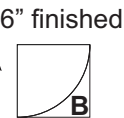
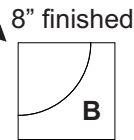


Both A & B pieces fit inside of a 10" square.

HandiGrabber strips

Fully cut out Piece B.

Piece B can be cut out smaller by cutting to the 6½ placement line. The finished block will now be 3 inches. The curve will now go to the corner of the block.



Cut each slit on the curve of Piece B.



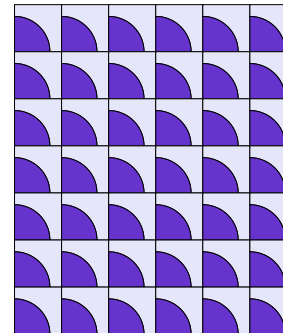
Cut out Piece A and cut each slit.



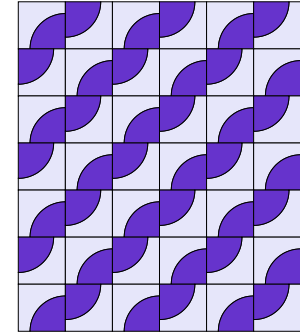
Press to the dark side either to Piece A or Piece B. Here it is pressed to Piece B.

Have fun laying out your blocks!
Here are some examples.

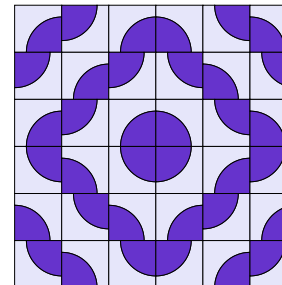
42 blocks 48" x 58"



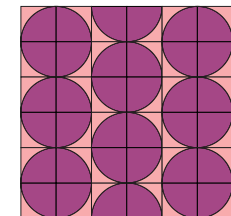
42 blocks 48" x 58"



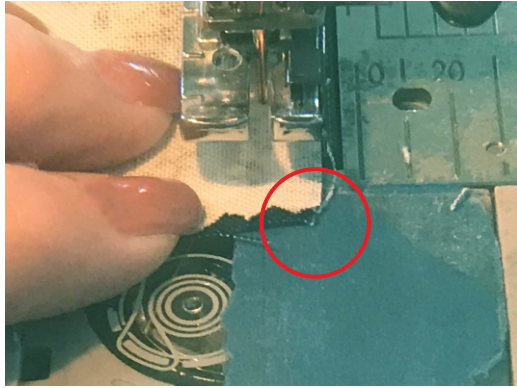
36 blocks 48" x 48"



36 blocks 36" x 36"
block size is 6"



To calculate the yardage needed for the pieces for your project, you may use our free Slit 'N Sew Fabric Calculator at <https://www.quiltersparadiseesc.com/Calculators/SnS Fabric Calculator/Slit N Sew Fabric Calculator.php>.



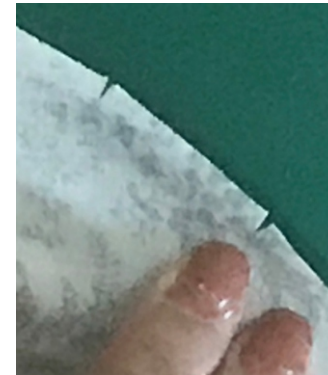
Keep sewing matching the slits until the end. Make sure you have the edges of Pieces A and B together.



Remove from the sewing machine. Will look as shown.



Once fully cut out, pull so you can see the slits.



Helpful Cutting Hints

Use a sharp rotary cutting blade.

Use either a 28 mm or 45 mm rotary cutter blade. Experience suggests that the 28 mm size tends to work better when cutting tighter curves and cutting slits.

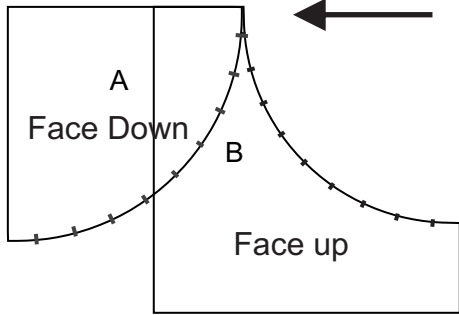
Always cut slits away from yourself by putting the rotary cutter on the inside end of the slit and cutting to the edge of the template.

Cut slits must and need not extend inside the 1/4" seam allowance line. This will not occur with use of 28 mm or 45 mm rotary cutter blades.

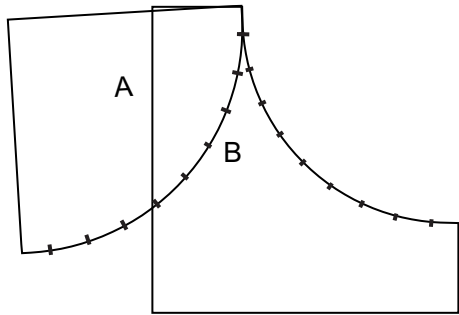
You are encouraged to experiment with scrap fabric first to see which blade size and cutting technique work best for you along with how many layers of fabric to cut at a time.

You can use a sharpened pencil or fine tipped marker to mark the slits and use scissors to cut the slits. However, be sure that the marks and cuts do not go inside the 1/4" seam allowance line.

Sewing Directions



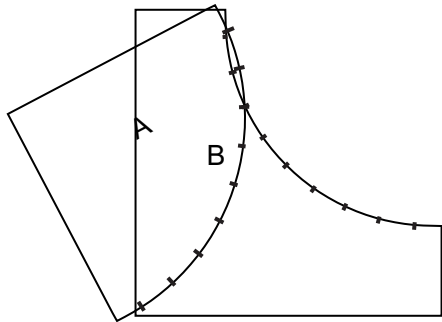
Place Piece B face up.
Place Piece A face down matching the edges.



I set my stitch length to 1.8.
Stitch 1/4" from the edge and stop after 3 stitches with the needle down.



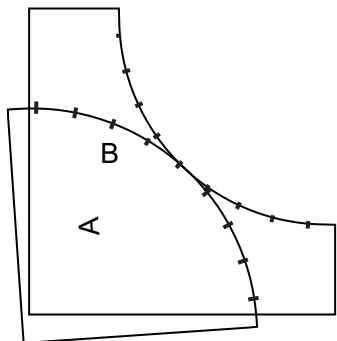
The pieces will gather when sewing.



Raise the pressure foot and pull Pieces A and B together matching the next slit.
Lower pressure foot and sew to the slit.



With your needle down, pull Piece B and A together matching the slits.



Continue this process until the entire curve is sewn.

